



Saltoun Road, Brixton, SW2

1 bedroom flat - conversion for sale

£650,000

Share of Freehold

Property Details

This beautifully appointed and impressively spacious one double bedroom garden flat offers nearly 800 square feet of internal living space, complemented by a private cellar for additional storage. Thoughtfully extended and upgraded, the property blends period charm with modern design, featuring a generous front-facing double bedroom with a bay window and feature fireplace, currently used as a reception room by the owners. To the rear, a stunning open plan reception and kitchen forms the heart of the home, complete with sleek cabinetry, integrated appliances, underfloor heating and large skylights, with bi-folding doors opening onto a landscaped south-facing garden with new tiling and raised planters. A versatile internal study sits adjacent to the main bathroom and is currently used as a sleeping area, offering flexibility as a home office or guest space. The spacious bathroom includes both a bath and separate shower with a skylight above, while excellent built-in storage and a modern heat pump system enhance comfort and efficiency throughout.

Features

- One double bedroom plus additional room
- Private south-facing garden
- Victorian conversion
- Over 800 square feet
- Heat pump and underfloor heating
- Bright, airy and beautifully presented
- Sought-after location, moments from Brixton Village
- Short walk to Brixton tube station and Brockwell Park
- Share of freehold. Chain-free

Council tax band C EPC rating D (66)

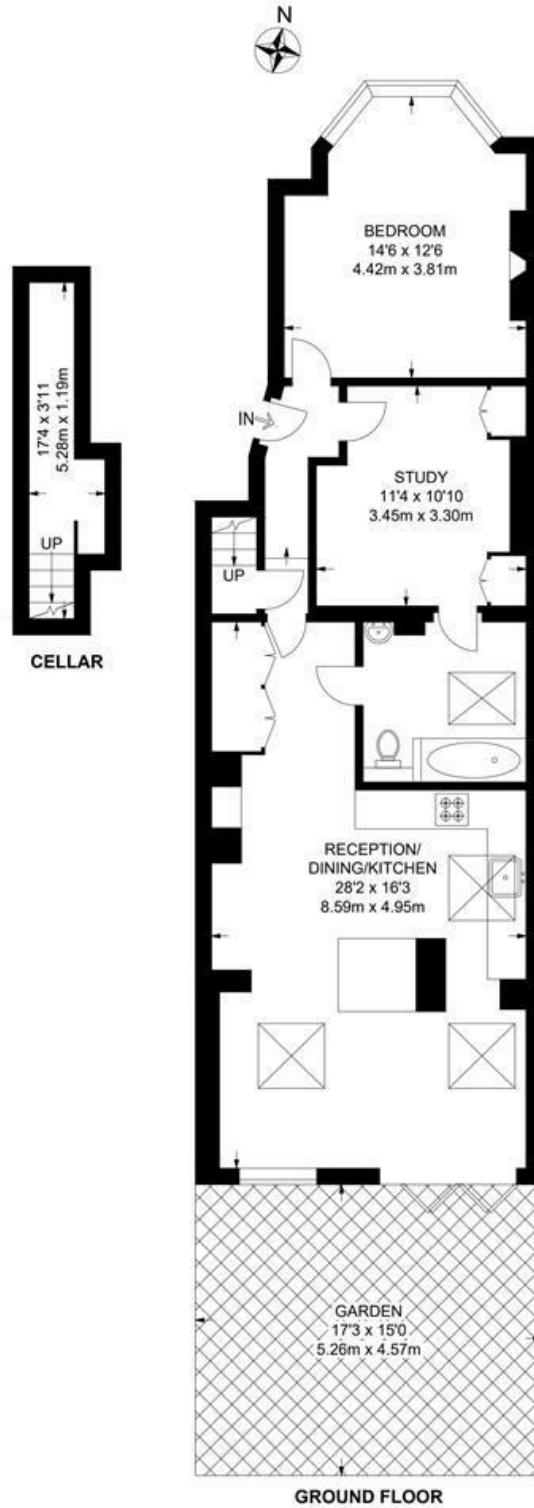




Saltoun Road, Brixton, SW2

Saltoun Road, SW2
1 Bedroom Flat

APPROXIMATE GROSS INTERNAL AREA WITH CELLAR: **850 SQ FT / 79.0 SQ M**
 APPROXIMATE GROSS INTERNAL AREA WITHOUT CELLAR: **799 SQ FT / 74.2 SQ M**



While we try our very best, floor plans are produced as a guide only and we take no responsibility for the precise accuracy with which any property is represented.

Saltoun Road, Brixton, SW2

